



Wiskerchen Cheese Inc. SOP

Title: Air Exposure Plating

2.002

Issue Date: 10/8/15	Written By: Abby Hoffman	Approved By: John Wiskerchen	Revision # 1	Revision Date: 1/19/22	Revised By: Nicole Mayfield	Supersedes: 4/20/20	Page 1 of 2
------------------------	-----------------------------	---------------------------------	-----------------	---------------------------	--------------------------------	------------------------	-------------

Purpose: To routinely sample air quality in specified locations within the facility.

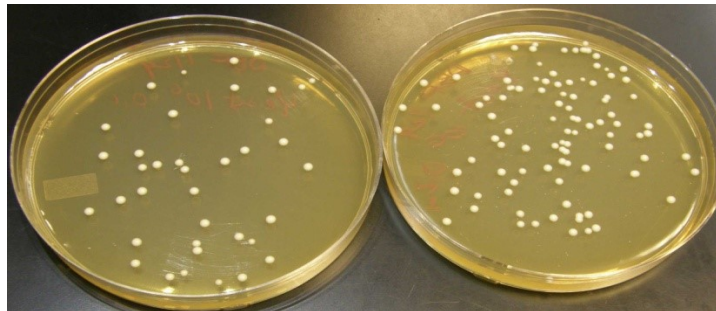
Overview: Sampling will be done by the Quality Assurance Staff daily to monitor the circulation of yeast and mold.

Procedure:

1. Label petri dish that will contain solidified medium with location and date.
2. For each test, pour the contents of one bottle of Easygel Potato Dextrose into one petri dish, swirl to cover the dish bottom and allow to stand on a level surface for 40-45 minutes until solidified.
3. Position the dishes in the chosen test locations and remove the lid to expose the medium surface to the open air so that any spores floating in the air will stick to the moist medium surface.
4. After 15 minutes replace the lids to cover the dishes and return to lab.
5. Stack petri dishes on top of one another and rubber band together.
6. Place in lab cabinet for 5 days.
7. After 5 days, read/interpret plates.

Interpretation:

1. Yeast:
 - Yeast colonies tend to grow as small, shiny, white to off-white colonies with defined smooth borders.



2. Mold:
 - Molds growing on the surface will usually exhibit colors of green, gray or black and will appear fuzzy.





Wiskerchen Cheese Inc. SOP

Title: Air Exposure Plating	# 2.002
-----------------------------	---------

Issue Date: 10/8/15	Written By: Abby Hoffman	Approved By: John Wiskerchen	Revision # 1	Revision Date: 1/19/22	Revised By: Nicole Mayfield	Supersedes: 4/20/20	Page 2 of 2
------------------------	-----------------------------	---------------------------------	-----------------	---------------------------	--------------------------------	------------------------	-------------

Documentation:

1. Record results on Yeast and Mold Plate form #7.103
[..\WCI - 7 Forms & Logs\7.103 Form - Yeast & Mold Plate Reading.xlsx](#)
2. Enter results in Environmental Sample Tracking and Trending Report.